



Material

High impact resistant thermoplastic

Standard colour

Black. Other RAL colours on request (MOQs apply).

Finish

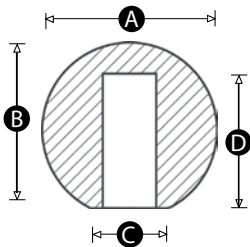
Matt finish

Bore

Push-fit assembly

Shaft diameter

Imperial and metric sizes



Part No.	A	B	C	D	Shaft type	To fit shaft diameter - H9 tolerance (mm)	To fit shaft diameter - H9 tolerance (inches)
14291W	20	19	10	15	Plain	5	0.188
9977P	25	23	13	17	Plain	6	0.25
9943T	25	23	13	17	Plain	8	0.313
9899T	32	30	14	24	Plain	8	0.313
9978W	32	30	14	24	Plain	10	0.375
9979S	38	36	18	27	Plain	10	0.375
9980Z	38	36	18	27	Plain	12	0.5
14292S	50	49	19	40	Plain	12	0.5