

**Material**

High impact resistant thermoplastic

**Standard colour**

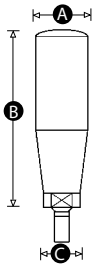
Black

**Finish**

Matt

**Male thread material**

Zinc plated steel with allen key fixing hole.



Part No.	A	B	C	Thread size
7757S	20	55	12	M6
7756W	23	67	18	M8
7753X	25	77	18	M8
7755P	25	77	18	M10
7752Q	27	87	20	M10
7751U	27	87	20	M12
7750Y	29	97	20	M10
7749R	29	97	20	M12