



Handle material

Reinforced nylon (15% glass filled PA6)

Female insert material

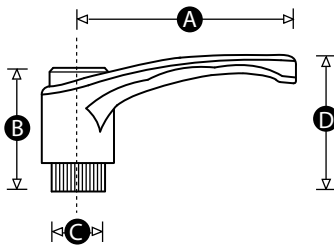
Brass, stainless steel or zinc plated steel as standard.

Standard colour combinations

Black handle with red cap, black handle with orange cap, orange handle with grey cap.

Options

Also available with caps in red, black, grey, white, blue, green, yellow or orange (MOQs apply). Other handle RAL colours available on request (MOQs apply).



Part No.	A	B	C	D	Thread size	Insert material	Handle + cap colour
12606P	43	29	12	30	M5	Stainless steel	Black + Orange
12625Q	43	29	12	30	M5	Steel	Black + Orange
12605T	43	29	12	30	M6	Stainless steel	Black + Orange
12624U	43	29	12	30	M6	Steel	Black + Orange
12605T	43	29	12	30	M6	Steel	Black + Red
12604X	65	38	15	44	M6	Stainless steel	Black + Orange
12623Y	65	38	15	44	M6	Steel	Black + Orange
12603Q	65	38	15	44	M8	Stainless steel	Black + Orange
12612Y	65	38	15	44	M8	Steel	Orange + Black
12622R	65	38	15	44	M8	Steel	Black + Orange
12603Q	65	38	15	44	M8	Steel	Black + Red
12602U	83	47	19	54	M8	Stainless steel	Black + Orange
12613U	83	47	19	54	M8	Steel	Orange + Black
12621V	83	47	19	54	M8	Steel	Black + Orange

Continued overleaf »

« Continued from overleaf

Part No.	A	B	C	D	Thread size	Insert material	Handle + cap colour
12601Y	83	47	19	54	M10	Stainless steel	Black + Orange
12614Q	83	47	19	54	M10	Steel	Orange + Black
12620Z	83	47	19	54	M10	Steel	Black + Orange
12600R	83	47	19	54	M12	Stainless steel	Black + Orange
12615X	83	47	19	54	M12	Steel	Orange + Black
12626X	83	47	19	54	M12	Steel	Black + Orange
12620Z	83	47	19	54	M10	Steel	Black + Red
11485W	104	56	24	64	M12	Brass	Black + Red
11579U	104	56	24	64	M16	Brass	Black + Black